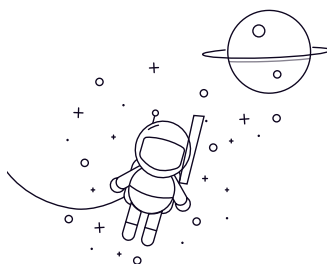


Inch RLS Series



выбрать	Расследование	No.	Size										Rated load(N)	
			Д		Д		Б		Shielded Type		Chamfering		Kp	Cor
			mm	inch	mm	inch	mm	inch	mm	inch	mm	inch		
			Open Type		Shielded Type		rsmin (r)							
RLS4	12.7	0.5	33.338	1.3125	9.525	0.375	9.525	0.375	0.6	0.024	5200	3800	0.03	
RLS5	15.875	0.625	39.688	1.5625	11.112	0.4375	11.112	0.4375	0.6	0.024	7200	4300	0.06	
RLS6	19.05	0.75	47.625	1.875	14.288	0.5625	14.288	0.5625	1	0.039	10000	6300	0.11	
RLS7	22.225	0.875	50.8	2	14.288	0.5625	14.288	0.5625	1	0.039	12000	7600	0.13	
RLS8	25.4	1	57.15	2.25	15.875	0.625	15.875	0.625	1	0.039	14000	9700	0.17	
RLS9	28.575	1.125	63.5	2.5	15.875	0.625	15.875	0.625	1	0.039	15300	10200	0.21	
RLS10	31.75	1.25	69.85	2.75	17.462	0.6874	17.462	0.6874	1.1	0.043	18300	12300	0.28	
RLS11	34.925	1.375	76.2	3	17.462	0.6874	17.462	0.6874	1.1	0.043	20100	13900	0.37	
RLS12	38.1	1.5	82.55	3.25	19.05	0.75	19.05	0.75	1.1	0.043	24000	17000	0.43	