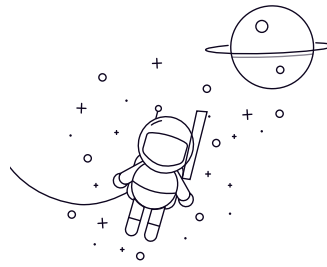


GEFZ...T



| выбрать | Расследование | Bearing number | Overall dimension [mm] | | | | | | | | Rated load [kN] | | Масса (кг) |
|---------|---------------|----------------|------------------------|-------|-------|-------|----------------|--------------------|---------------------|-----|-----------------|-------------|------------|
| | | | д | Д | Б | С | d _k | r _s min | r _{1s} min | a° | live load | Static load | |
| GEFZ4T | 4.83 | 14.29 | 7.14 | 5.54 | 10.31 | 3 | 0.38 | 11 | 7.4 | 11 | 0.006 | | |
| GEFZ4T | 0.19 | 0.5625 | 0.281 | 0.218 | 0.406 | 0.012 | 0.015 | 11 | 7.4 | 11 | 0.006 | | |
| GEFZ6T | 6.35 | 16.67 | 8.71 | 6.35 | 12.7 | 0.3 | 0.56 | 13.5 | 10 | 15 | 0.010 | | |
| GEFZ6T | 0.25 | 0.6562 | 0.343 | 0.25 | 0.5 | 0.012 | 0.022 | 13.5 | 10 | 15 | 0.010 | | |
| GEFZ7T | 7.94 | 19.05 | 9.53 | 7.14 | 14.27 | 0.3 | 0.81 | 12 | 13 | 19 | 0.014 | | |
| GEFZ7T | 0.3125 | 0.75 | 0.375 | 0.281 | 0.562 | 0.012 | 0.032 | 12 | 13 | 19 | 0.014 | | |
| GEFZ9T | 9.53 | 20.64 | 10.31 | 7.92 | 16.66 | 0.3 | 0.81 | 10 | 17 | 25 | 0.018 | | |
| GEFZ9T | 0.375 | 0.8125 | 0.406 | 0.312 | 0.656 | 0.012 | 0.032 | 10 | 17 | 25 | 0.018 | | |
| GEFZ11T | 11.11 | 23.02 | 11.1 | 8.71 | 17.45 | 0.3 | 0.81 | 8 | 19 | 28 | 0.021 | | |
| GEFZ11T | 0.4375 | 0.9062 | 0.437 | 0.343 | 0.687 | 0.012 | 0.032 | 8 | 19 | 28 | 0.021 | | |
| GEFZ12T | 12.7 | 25.4 | 12.7 | 9.91 | 20.65 | 0.3 | 0.81 | 9.5 | 26 | 39 | 0.029 | | |
| GEFZ12T | 0.5 | 1 | 0.5 | 0.39 | 0.813 | 0.012 | 0.032 | 9.5 | 26 | 39 | 0.029 | | |
| GEFZ14T | 14.29 | 27.78 | 14.27 | 11.1 | 23.01 | 0.3 | 0.81 | 9.5 | 33 | 49 | 0.042 | | |
| GEFZ14T | 0.5625 | 1.0937 | 0.562 | 0.437 | 0.906 | 0.012 | 0.032 | 9.5 | 33 | 49 | 0.042 | | |
| GEFZ15T | 15.88 | 30.16 | 15.88 | 12.7 | 25.4 | 0.3 | 0.81 | 9.5 | 41 | 61 | 0.053 | | |
| GEFZ15T | 0.625 | 1.1875 | 0.625 | 0.5 | 1 | 0.012 | 0.032 | 9.5 | 41 | 61 | 0.053 | | |
| GEFZ19T | 19.05 | 36.51 | 19.05 | 15.06 | 30.15 | 0.3 | 1.12 | 9 | 59 | 88 | 0.094 | | |
| GEFZ19T | 0.75 | 1.4375 | 0.75 | 0.593 | 1.187 | 0.012 | 0.044 | 9 | 59 | 88 | 0.094 | | |
| GEFZ22T | 22.23 | 39.69 | 22.23 | 17.86 | 33.32 | 0.6 | 1.12 | 9.5 | 89 | 133 | 0.119 | | |
| GEFZ22T | 0.875 | 1.5625 | 0.875 | 0.703 | 1.312 | 0.024 | 0.044 | 9.5 | 89 | 133 | 0.119 | | |
| GEFZ25T | 25.4 | 44.45 | 25.4 | 20.24 | 38.1 | 0.6 | 1.12 | 10 | 115 | 172 | 0.173 | | |
| GEFZ25T | 1 | 1.75 | 1 | 0.797 | 1.5 | 0.024 | 0.044 | 10 | 115 | 172 | 0.173 | | |