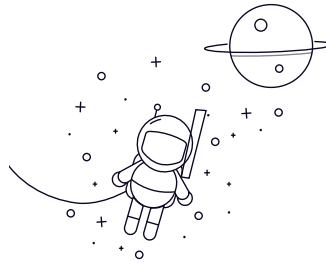


GAC..N



выбирать	Расследование	Bearing Number	Overall dimension [mm]									Rated load [kN]		Масса (кг)
			д	Д	Б	С	Т	dk	S	rsr _{1s} max	a°	live load	Static load	
GAC25N	25	47	15	14	15	42	0.6	1	2.5	20	32	0.148		
GAC30N	30	55	17	15	17	49.5	1.3	1	4.5	26	41	0.208		
GAC35N	35	62	18	16	18	55.5	2.1	1	4	31	49	0.268		
GAC40N	40	68	19	17	19	62	2.8	1	3.5	36	59	0.327		
GAC45N	45	75	20	18	20	68.5	3.5	1	3	43	69	0.416		
GAC50N	50	80	20	19	20	74	4.3	1	1.5	49	78	0.455		
GAC60N	60	95	23	21	23	88.5	5.7	1.1	2.5	65	104	0.714		
GAC70N	70	110	25	23	25	102	7.2	1.1	2	82	131	1.04		
GAC80N	80	125	29	25.5	29	115	8.6	1.1	3.5	102	164	1.54		
GAC90N	90	140	32	28	32	128.5	10.1	1.5	3.5	125	201	2.09		
GAC100N	100	150	32	31	32	141	11.6	1.5	0.5	152	244	2.34		
GACUON	110	170	38	34	38	155	13	2	3	184	295	3.68		
GAC120N	120	180	38	37	38	168	14.5	2	0.5	217	348	3.97		