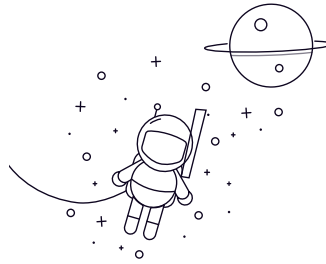


SA...E,ES



выбирать	Раследование	Bearing number	Dimension mm												load rating kN		Macca (кг)
			д	Б	dk	C1 max	d2	G 6g	h	l1 min	l2	l7	rs min	a°	dynamic load	static load	
SA5E ¹⁾	5	6	10	4.5	21	M5	36	16	46.5	11.5	0.3	13	3.4	3.9	0.017		
SA6E ¹⁾	6	6	10	4.5	21	M6	36	16	46.5	11.5	0.3	13	3.4	5.5	0.017		
SA8E ¹⁾	8	8	13	6.5	24	M8	42	21	54	13	0.3	15	5.5	10	0.029		
SA10E ¹⁾	10	9	16	7.5	29	M10	48	26	62.5	15.5	0.3	12	8.1	16	0.05		
SA12E ¹⁾	12	10	18	8.5	34	M12	54	28	71	18	0.3	10	10	23	0.066		
SA15ES ²⁾	15	12	22	10.5	40	M14	63	34	83	21	0.3	8	16	32	0.12		
SA17ES ²⁾	17	14	25	11.5	46	M16	69	36	92	24	0.3	10	21	44	0.19		
SA20ES ²⁾	20	16	29	13.5	53	M20x1.5	78	43	104.5	25.5	0.3	9	30	60	0.31		
SA25ES	25	20	35.5	18	64	M24x2	94	53	126	31	0.6	7	48	83	0.56		
SA30ES	30	22	40.7	20	73	M30x2	110	65	146.5	35.5	0.6	6	62	110	0.89		
SA35ES	35	25	47	22	82	M36x3	140	82	181	41	0.6	6	79	146	1.4		
SA40ES	40	28	53	24	92	M39x3	150	86	196	47	0.6	7	99	180	1.8		
SA45ES	45	32	60	28	102	M42x3	163	92	214	52	0.6	7	127	240	2.5		
SA50ES	50	35	66	31	112	M45x3	185	104	241	60	0.6	6	156	290	3.6		
SA60ES	60	44	80	39	135	M52x3	210	115	277.5	75.5	1	6	245	450	5.7		
SA70ES	70	49	92	43	160	M56x4	235	125	315	95	1	6	313	610	7.9		
SA80ES	80	55	105	48	180	M64x4	270	140	360	105.5	1	6	400	750	12		