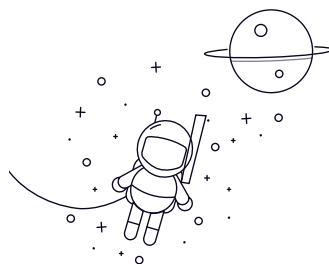


Thrust Ball Bearing (Si3N4)



выбирать Расследование Tojo Number

Dimentions (mm)

**Ref.
Weight
(кг)**

			д	Д	T	r(min)	d1 (min)	D2(min)	(кг)
51124	120	155	25	1	155	122	0.46		
51122	110	145	25	1	145	112	0.43		
51220	100	150	38	1.1	150	103	0.92		
51120	100	135	25	1	135	102	0.39		
51218	90	135	35	1.1	135	93	0.69		
51118	90	120	22	1	120	92	0.27		
51217	85	125	31	1	125	88	0.5		
51117	85	110	19	1	110	87	0.18		
51216	80	115	28	1	115	82	0.38		
51116	80	105	19	1	105	82	0.17		
51215	75	110	27	1	110	77	0.35		
51115	75	100	19	1	100	77	0.16		
51214	70	105	27	1	105	72	0.33		
51114	70	95	18	1	95	72	0.14		
51213	65	100	27	1	100	67	0.31		
51113	65	90	18	1	90	67	0.13		
51212	60	95	26	1	95	62	0.28		
51112	60	85	17	1	85	62	0.12		
51211	55	90	25	1	90	57	0.25		
51111	55	78	16	0.6	78	57	0.093		
51210	50	78	22	1	78	52	0.16		

Thrust Ball Bearing (Si3N4)

51110	50	70	14	0.6	70	52	0.063
51209	45	73	20	1	73	47	0.13
51109	45	65	14	0.6	65	47	0.059
51208	40	68	19	1	68	42	0.11
51108	40	60	13	0.6	60	42	0.049
51207	35	62	18	1	62	37	0.086
51107	35	52	12	0.6	52	37	0.033
51206	30	52	16	0.6	52	32	0.056
51106	30	47	11	0.6	47	32	0.026