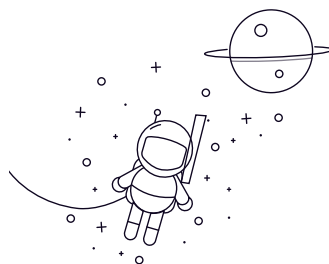


Insert Ball Bearing (SSiC)



выбирать Расследование Tojo Number			Dimentions (mm)						r/min	G ds
			Д	Д	Б	S	C			
UC201	12	47	31	12.7	17	0.6	4.5	M6 x 1		
UC202	15	47	31	12.7	17	0.6	4.5	M6 x 1		
UC203	17	47	31	12.7	17	0.6	4.5	M6 x 1		
UC204	20	47	31	12.7	17	1	4.5	M6 x 1		
UC205	25	52	34.1	14.3	17V	1	5	M6 x 1		
UC206	30	62	38.1	15.9	19	1	5	M6 x 1		
UC207	35	72	42.9	17.5	20	1.1	6	M8 x 1		
UC208	40	80	49.2	19	21	1.1	8	M8 x 1		
UC209	45	85	49.2	19	22	1.1	8	M8 x 1		
UC210	50	90	51.6	19	24	1.1	9	M10 x 1		
UC211	55	100	55.6	22.2	25	1.5	9	M10 x 1		
UC212	60	110	65.1	25.4	27	1.5	10	M10 x 1		
UC213	65	120	65.1	25.4	27	1.5	10	M10 x 1		
UC214	70	125	74.6	30.2	29	1.5	12	M12 x 1.25		
UC215	75	130	77.8	33.3	30	1.5	12	M12 x 1.25		
UC216	80	140	82.6	33.3	33	2	14	M12 x 1.25		
UC217	85	150	85.7	34.1	36	2	14	M12 x 1.25		
UC218	90	160	96	39.7	37	2	14	M12 x 1.25		
UC220	100	180	108	42	41	2	14	M12 x 1.25		